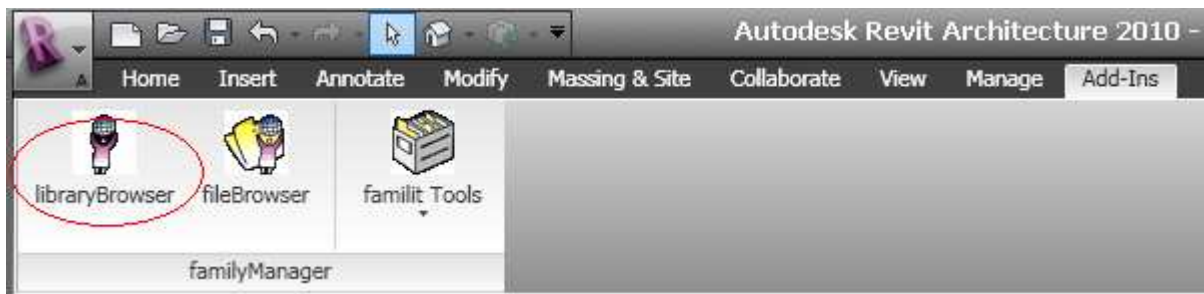
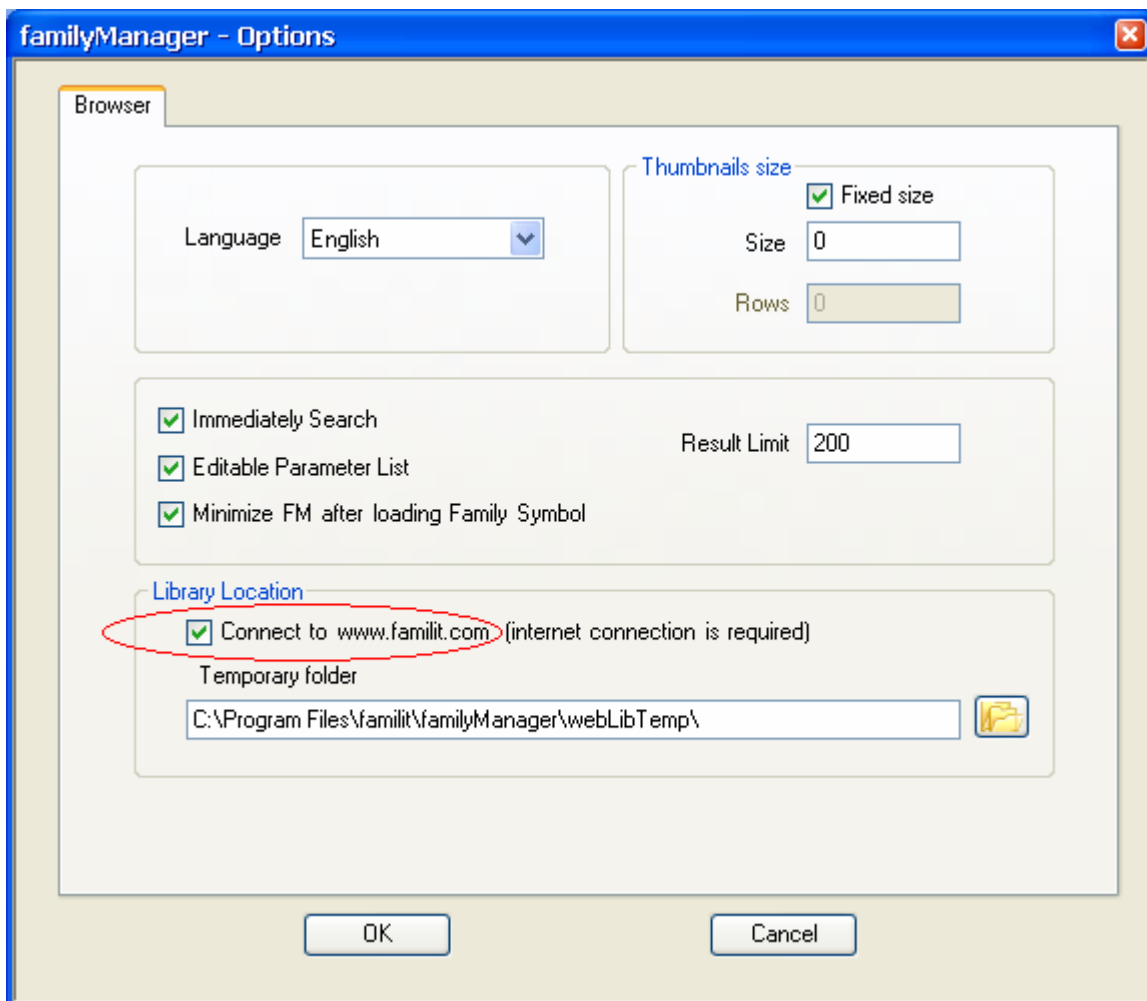


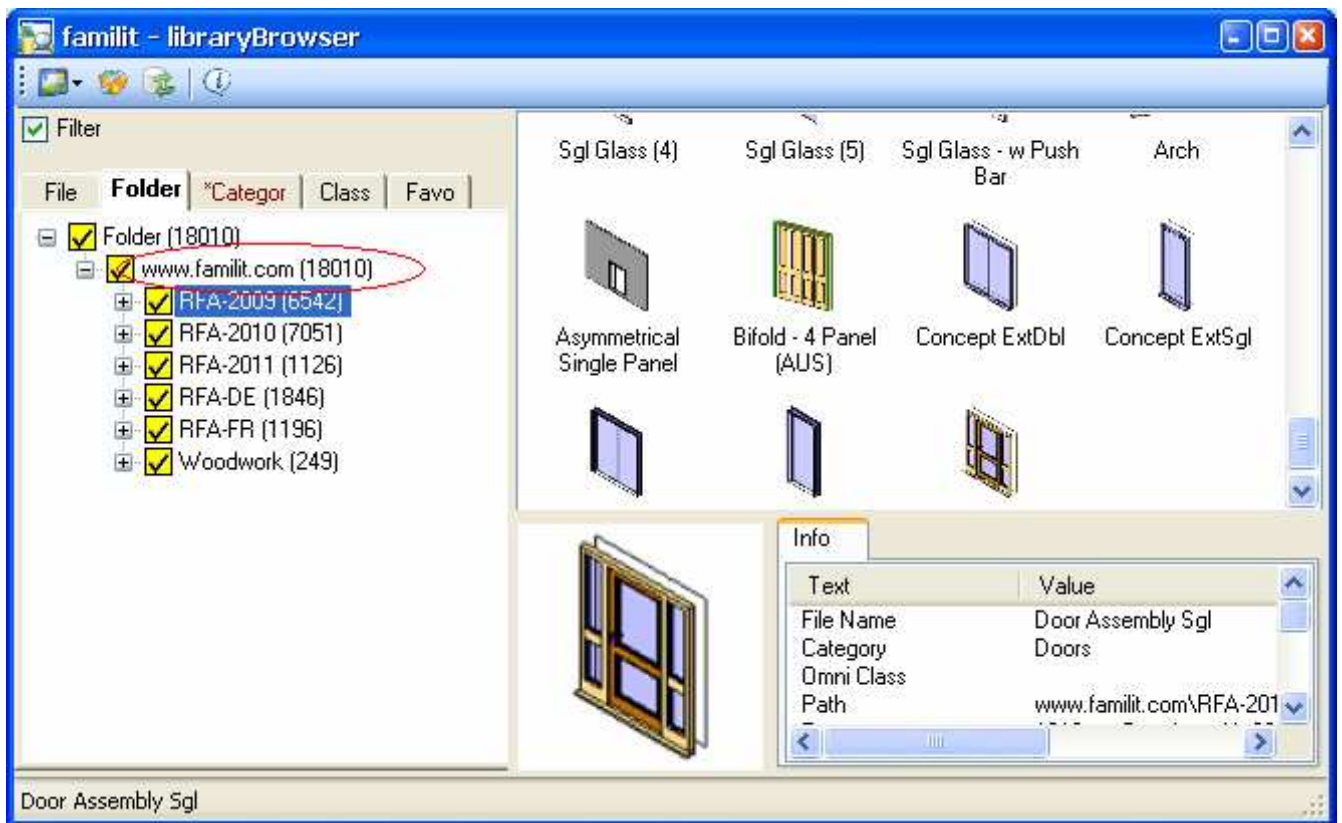
familit - familyManager - librarybrowser



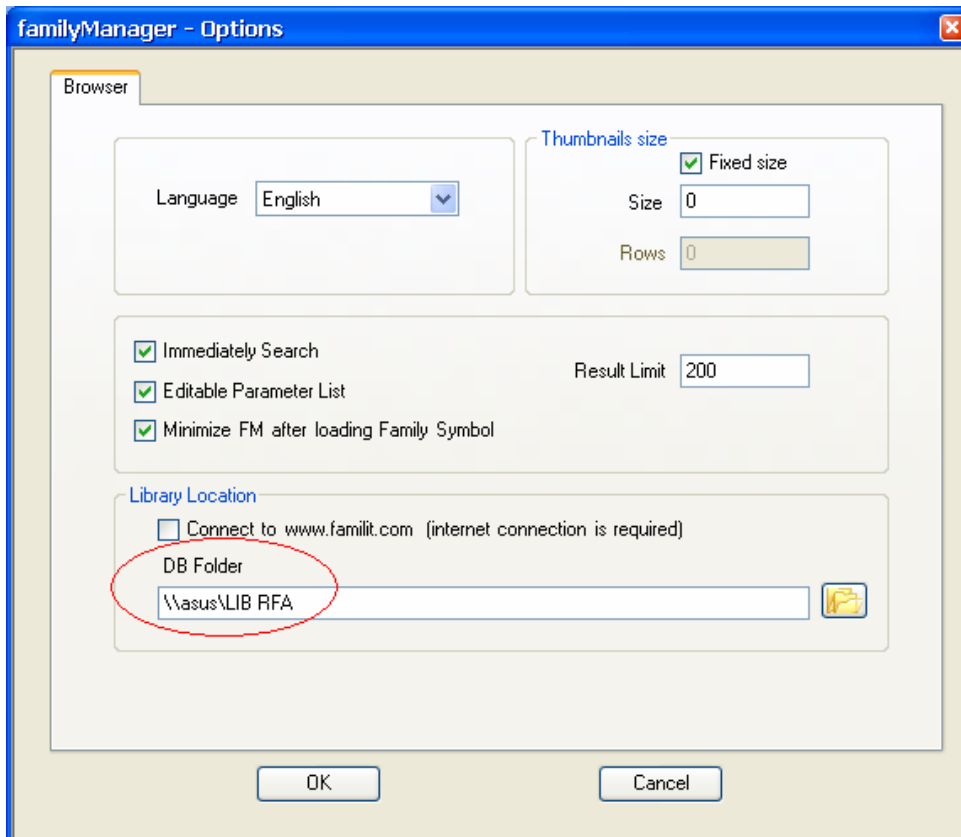
libraryBrowser is a new utility in the familyManager group. In addition to quick search of families in the prepared database it also now enables to classify, to display as well as a smooth loading in the Revit.



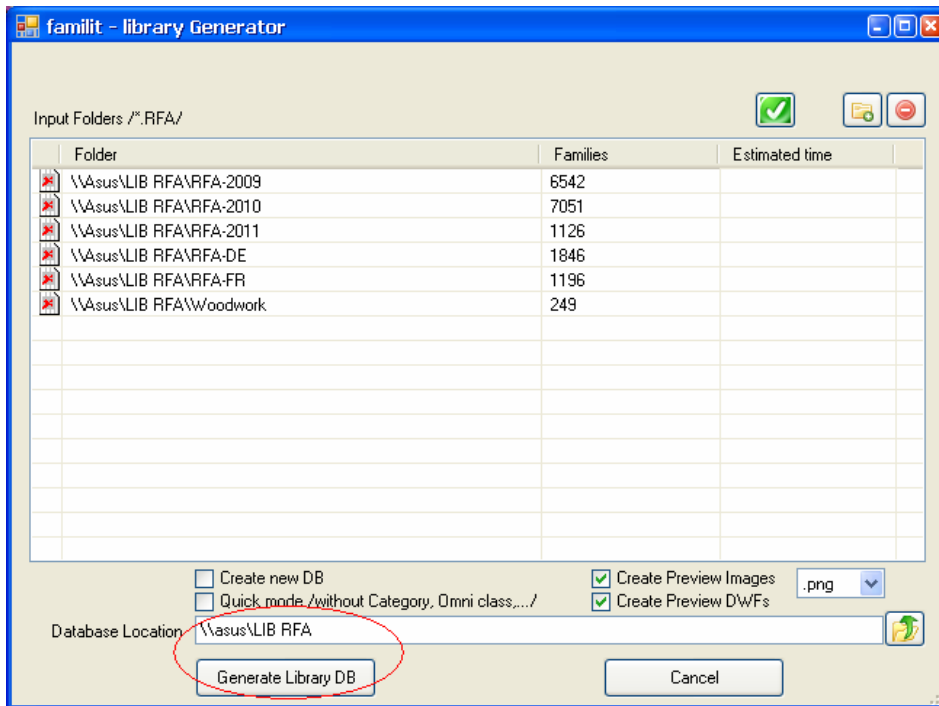
You can connect to familit web library.



You have immediately over 18000 families from the familit web library



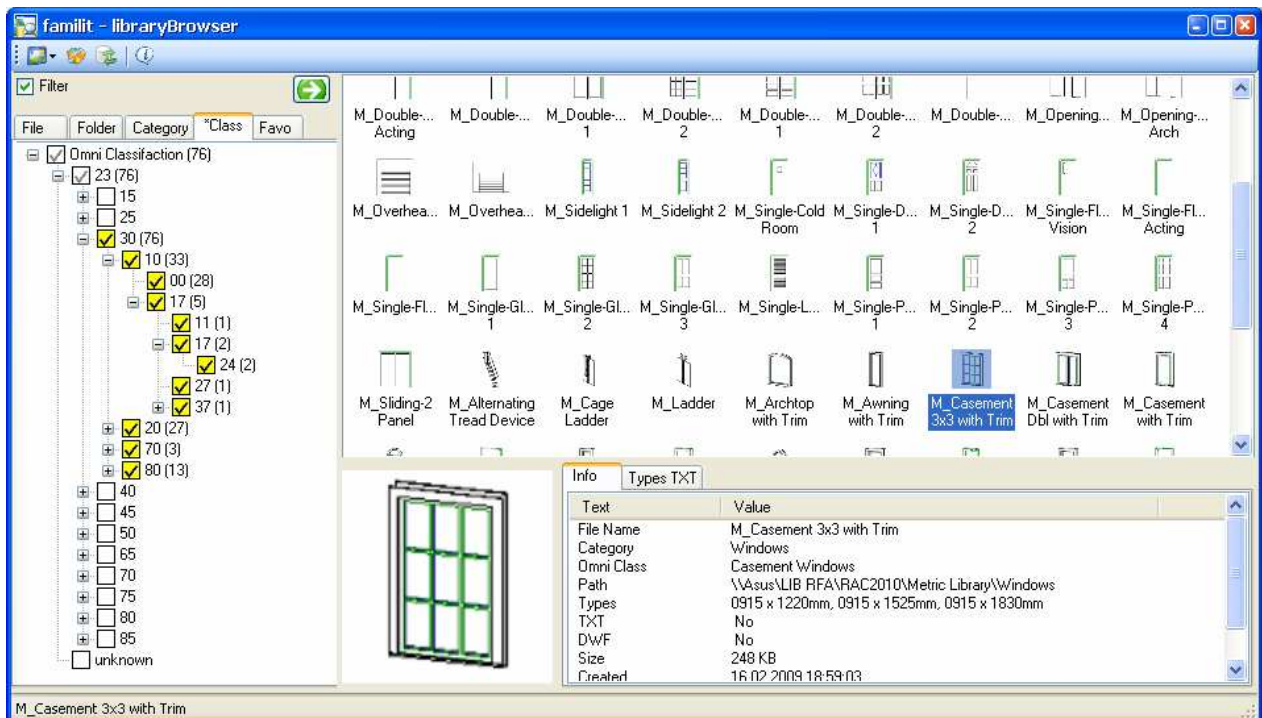
If the database in your PC (alternatively in your network) is already created, it is sufficient to assign its location.



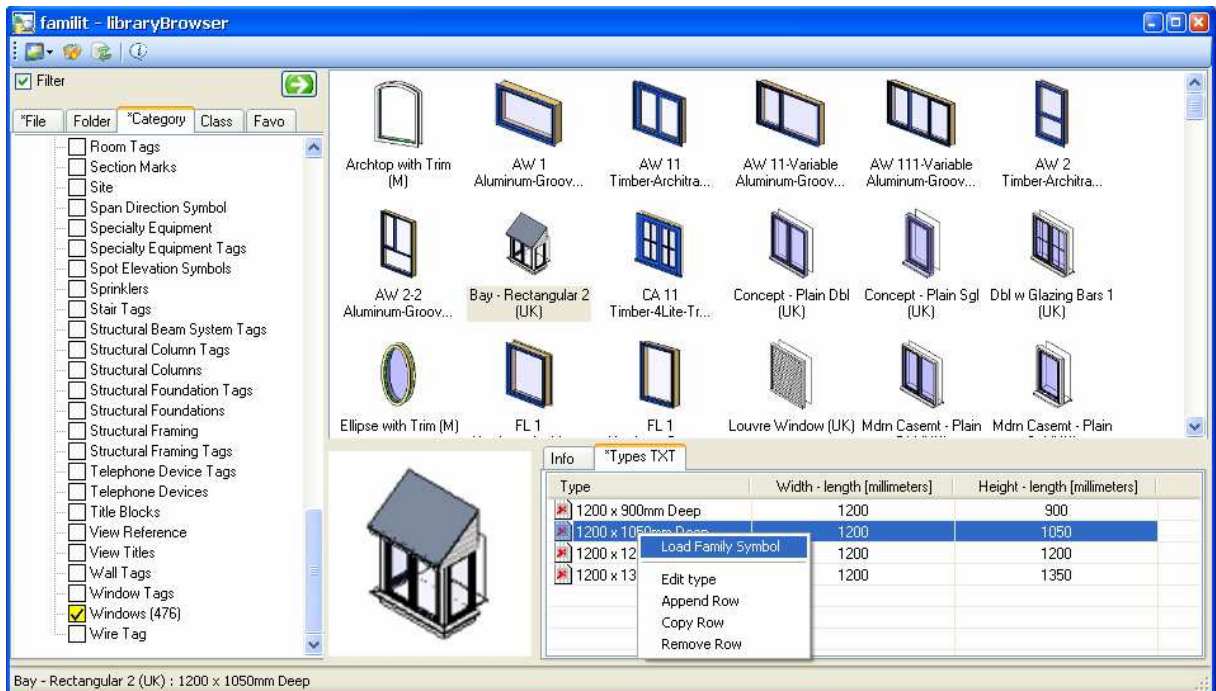
libraryGenerator will generate the family database. It is only required to specify in which folders occur your RFA files. There is support for drag&drop.

If you wish your database to include also internal data about families such as „category“ and „omni-class“ leave the corresponding checkbox unmarked. (however, opening and loading of desired parameters significantly extend the time of generation process).

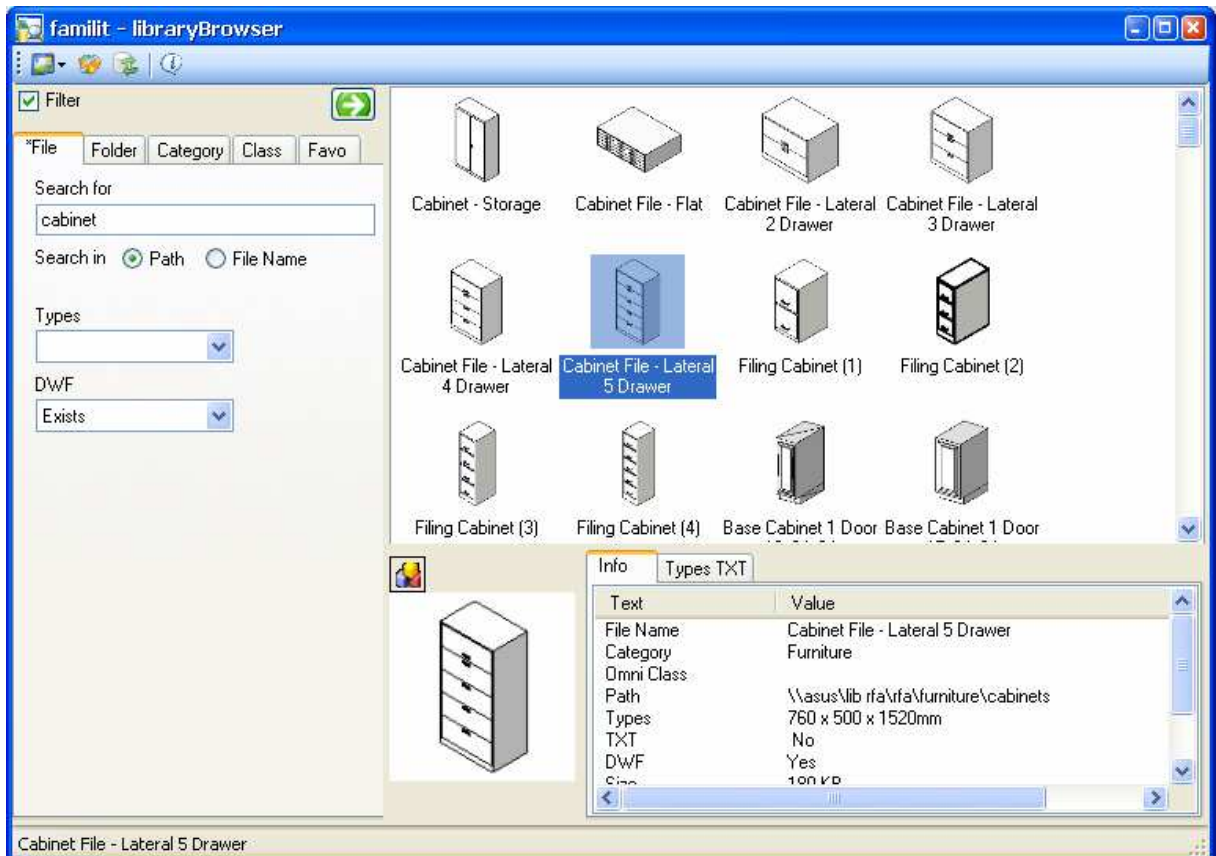
If you wish that the database will later be used by various users in the network please assign all paths in the form of network path – not locally.



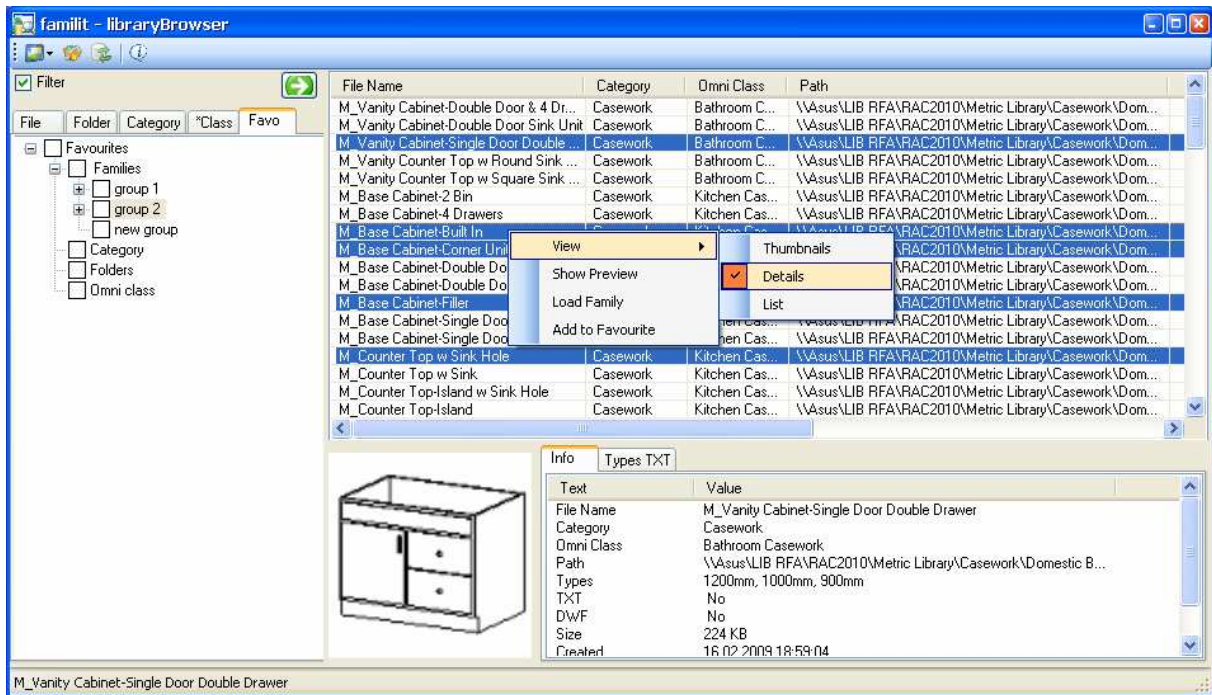
libraryBrowser – searching families according to omni-class



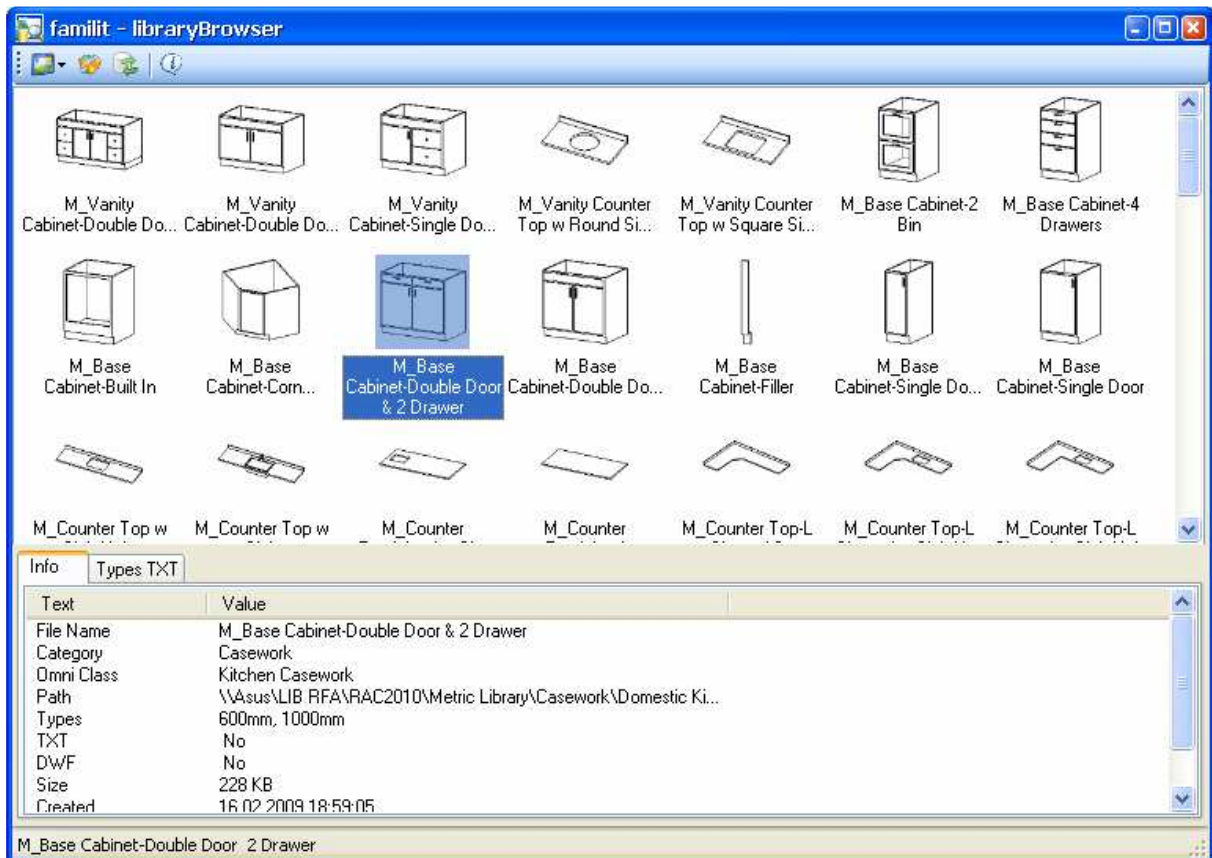
libraryBrowser – searching families according to category and loading particular types of chosen family into the Revit



libraryBrowser – searching families according to string, alternatively according the existence of types or DWF files enabling 3D preview.



It is possible to add chosen families (as well as any folders, categories and omni classes) into own favourite groups and thus having faster access to them. Drag&drop is allowed.



libraryBrowser in another configuration