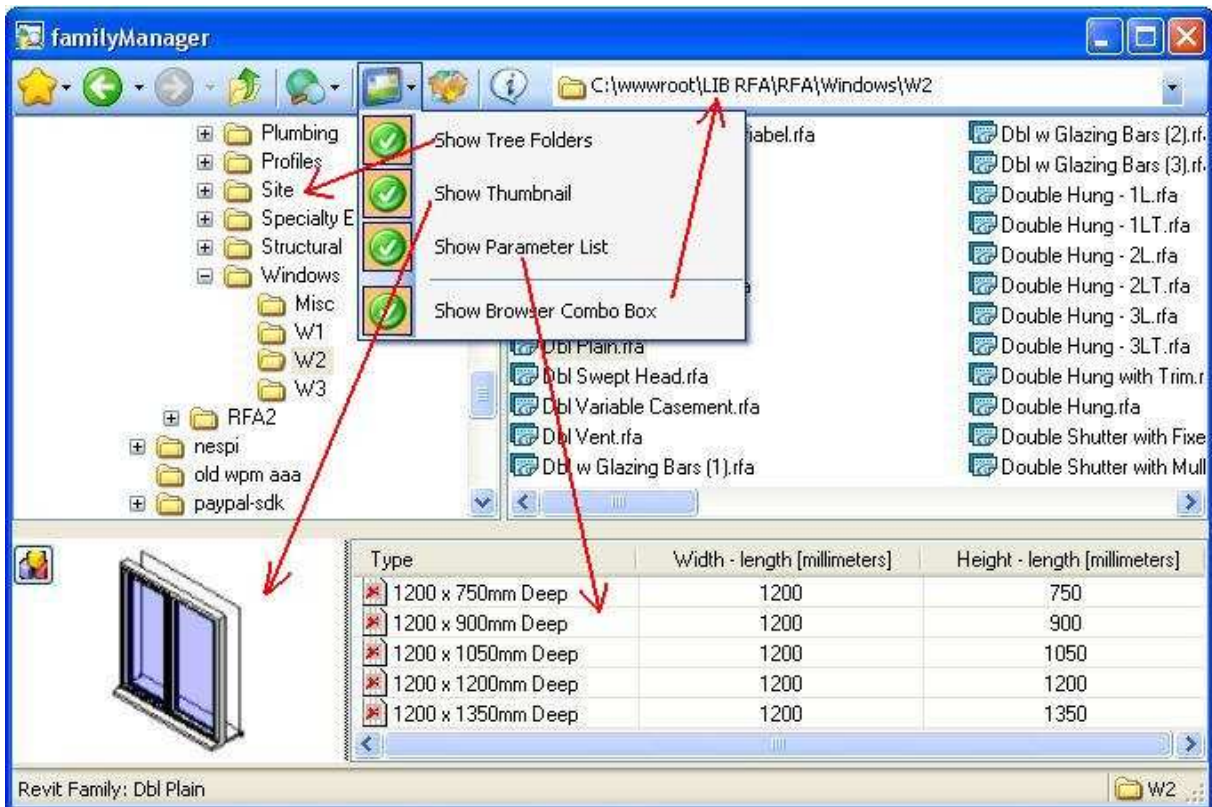
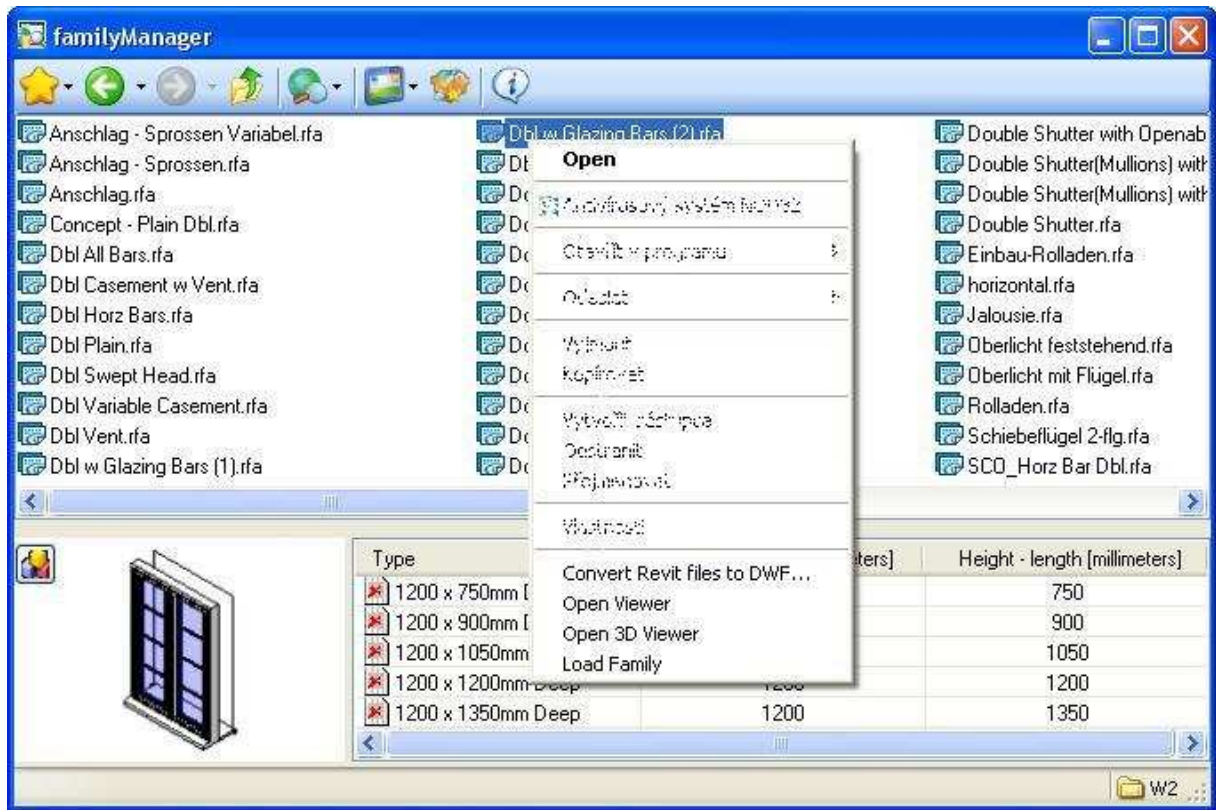


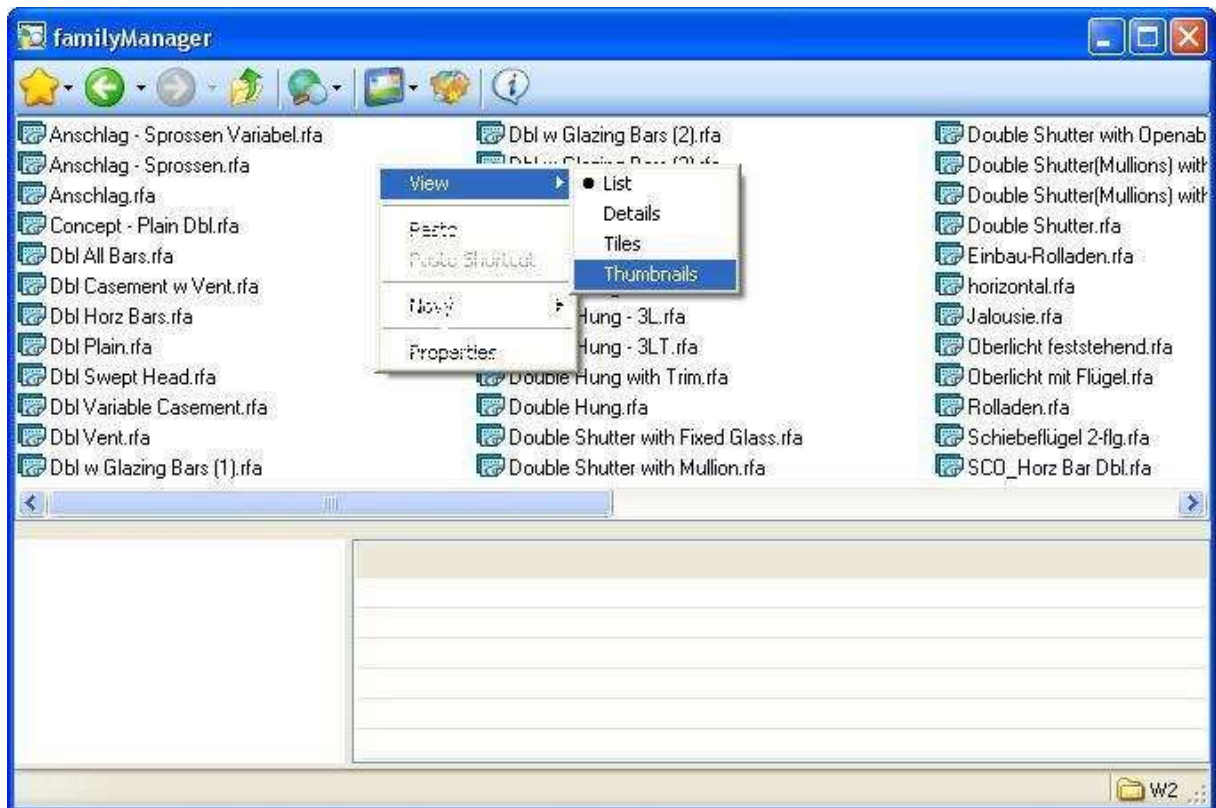
familyManager in Revit



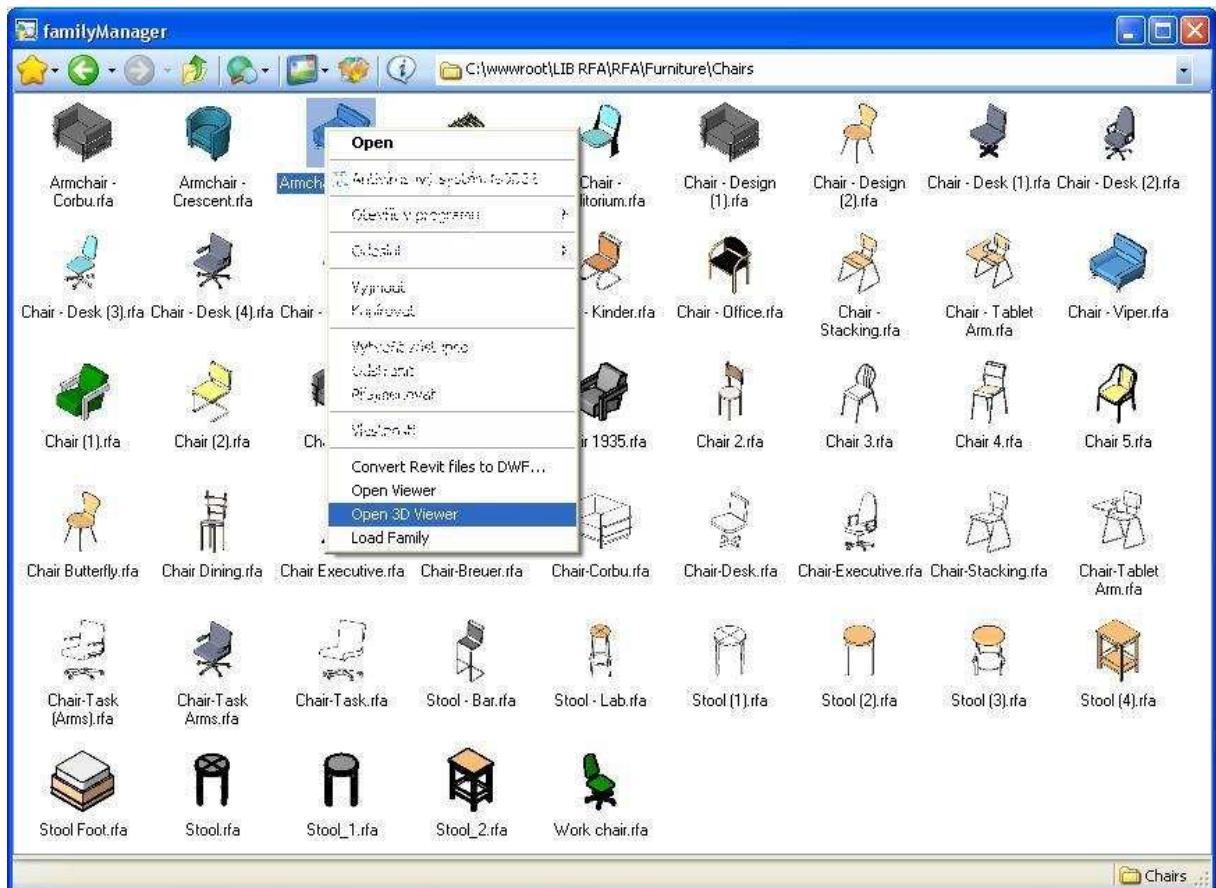
familyManager's Layout (view panels: Folders, Files, Thumbnail, ParameterList)



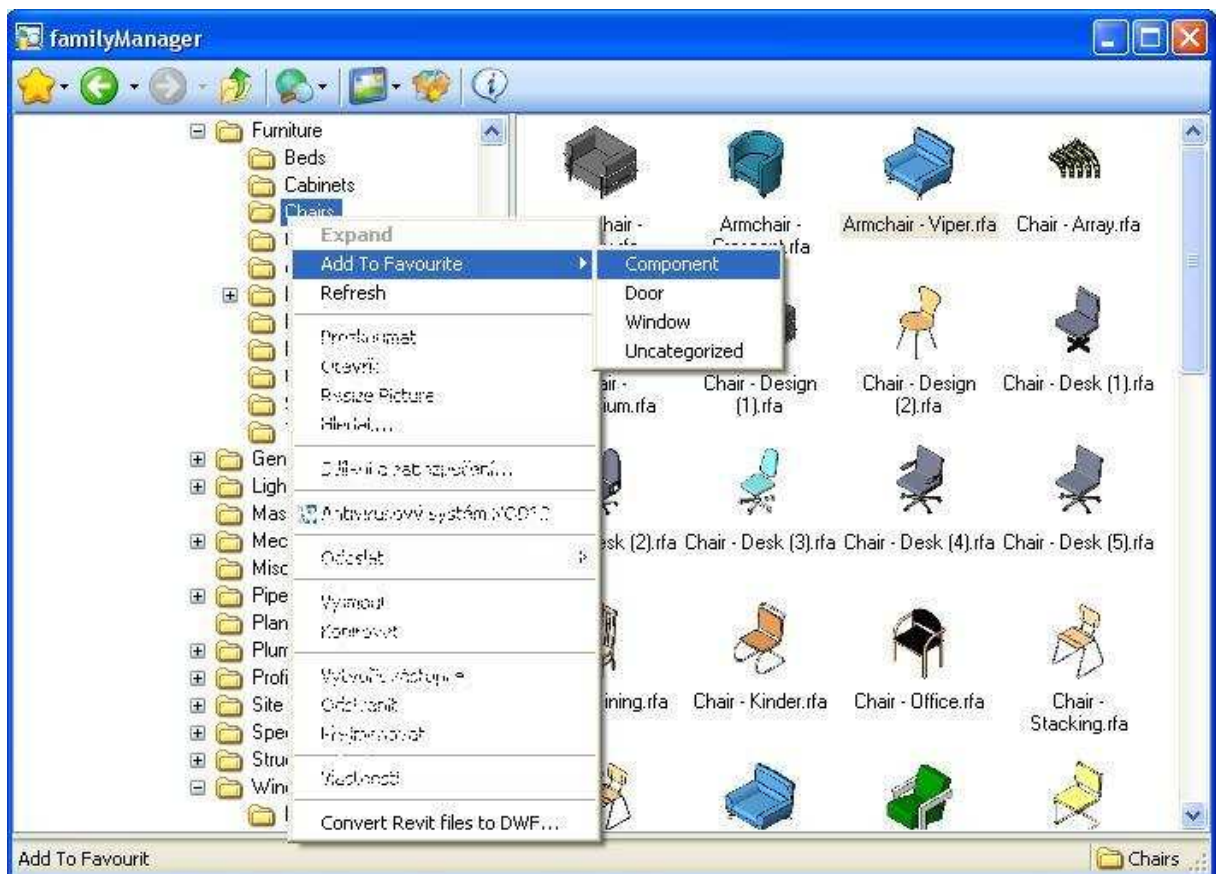
File view (file context menu)



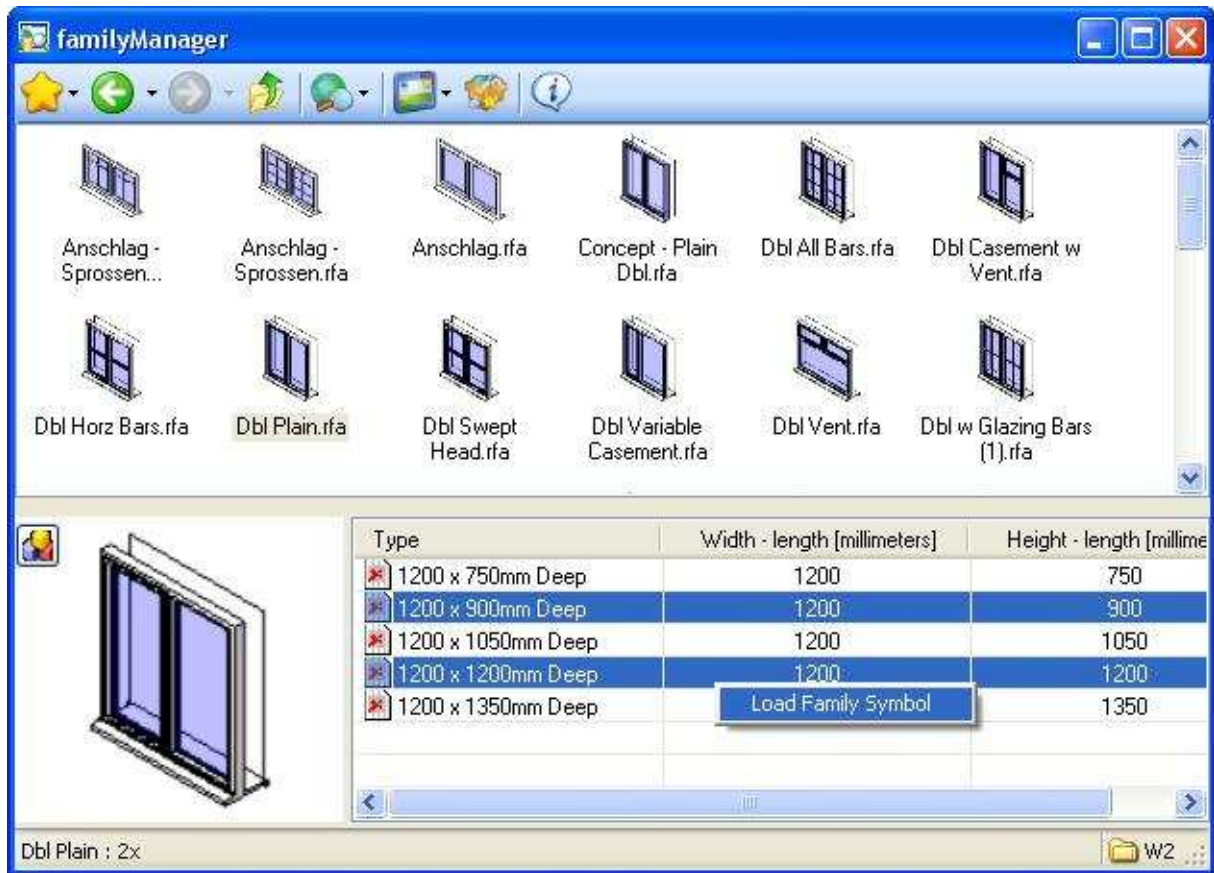
File view (panel view menu)



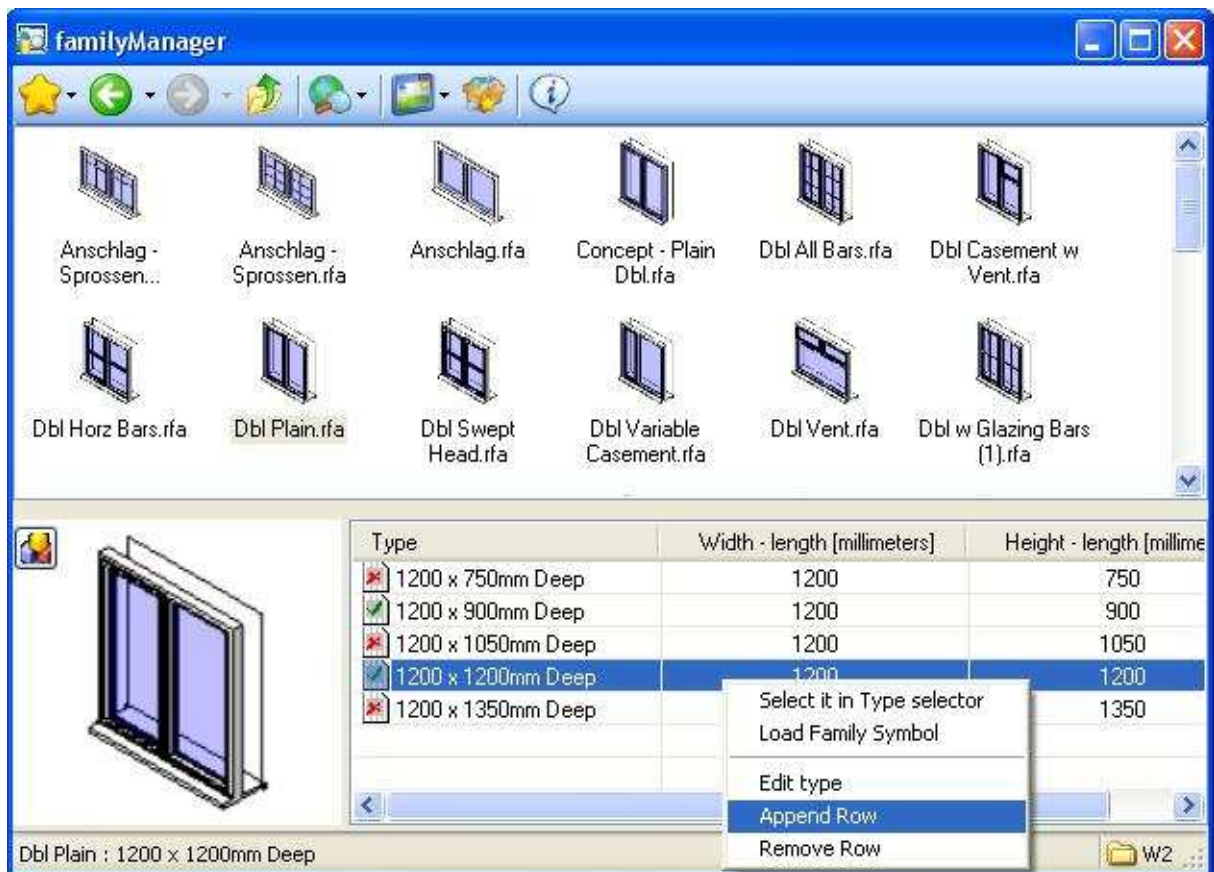
File's context menu



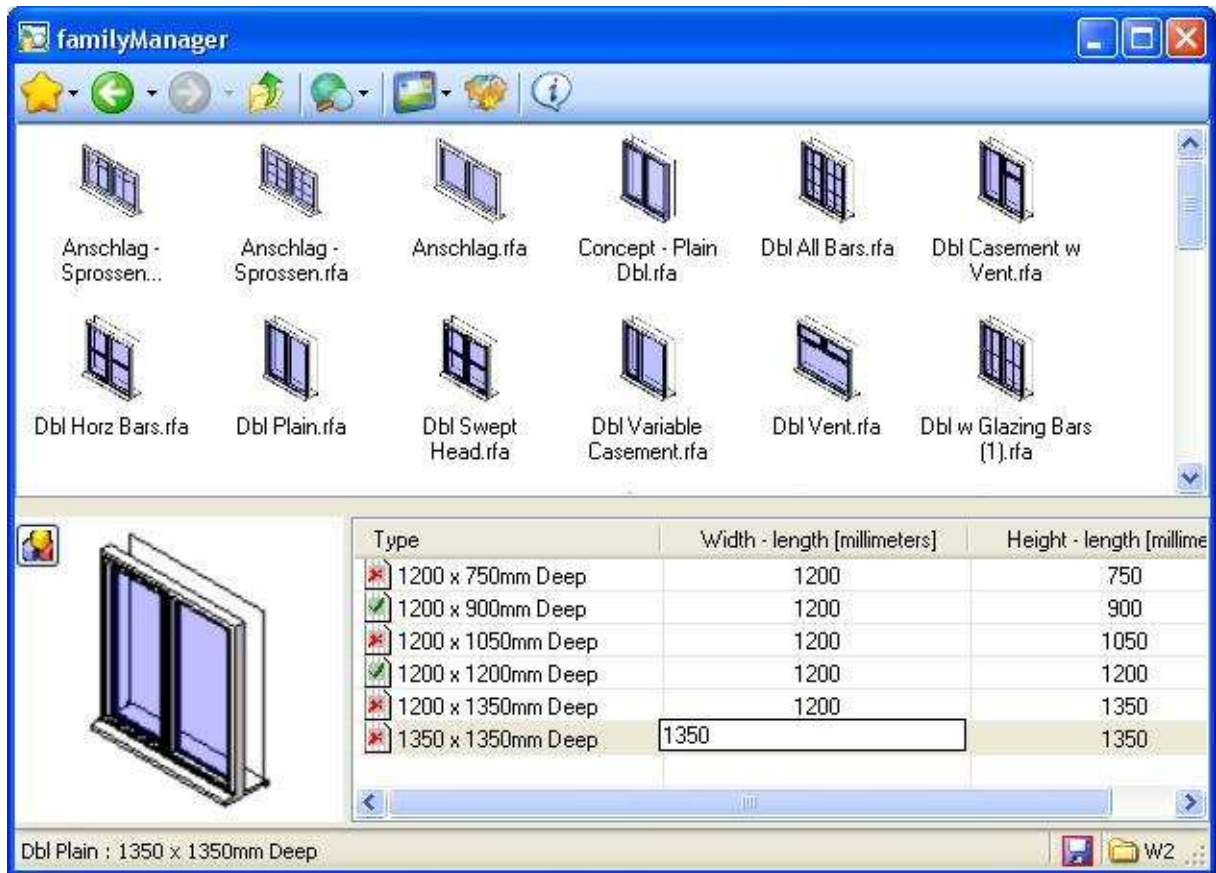
Folder's context menu



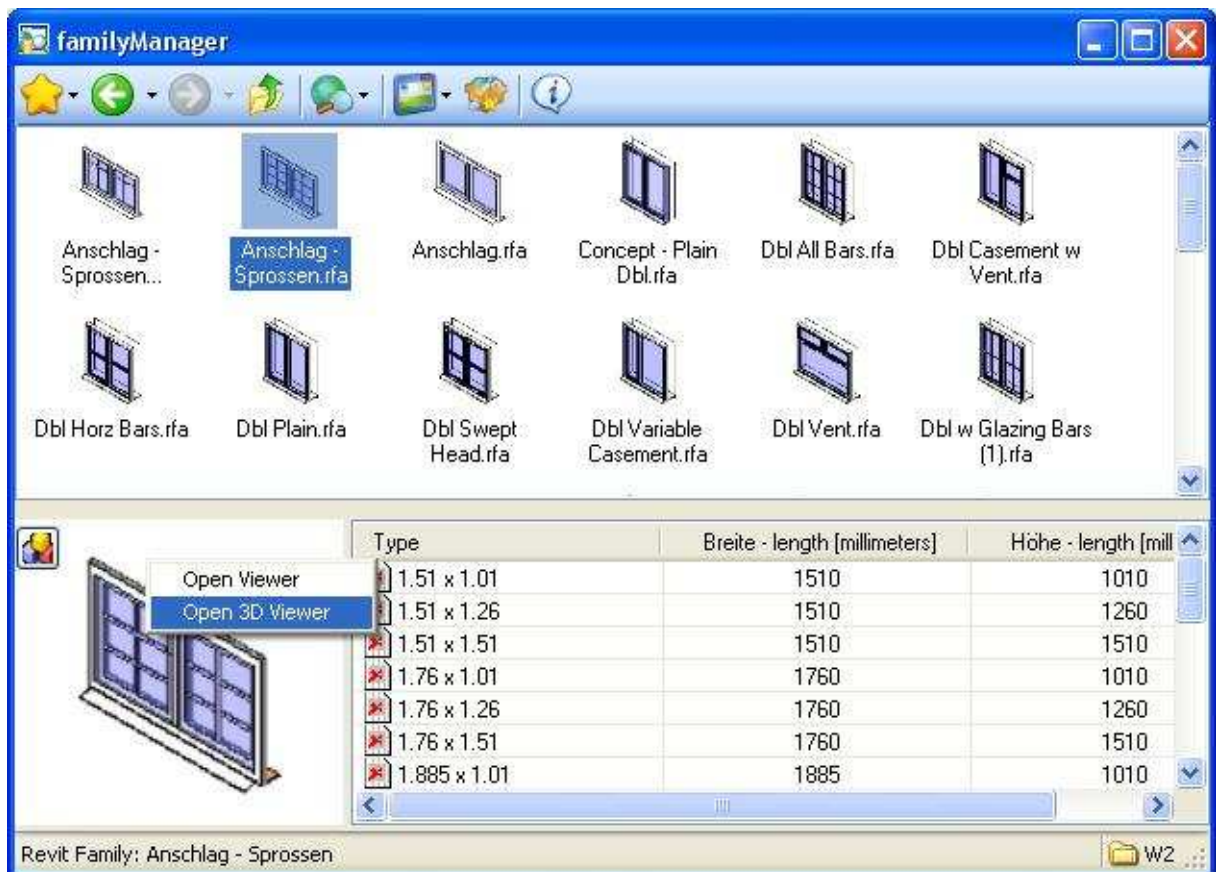
Parameter List (not editable)



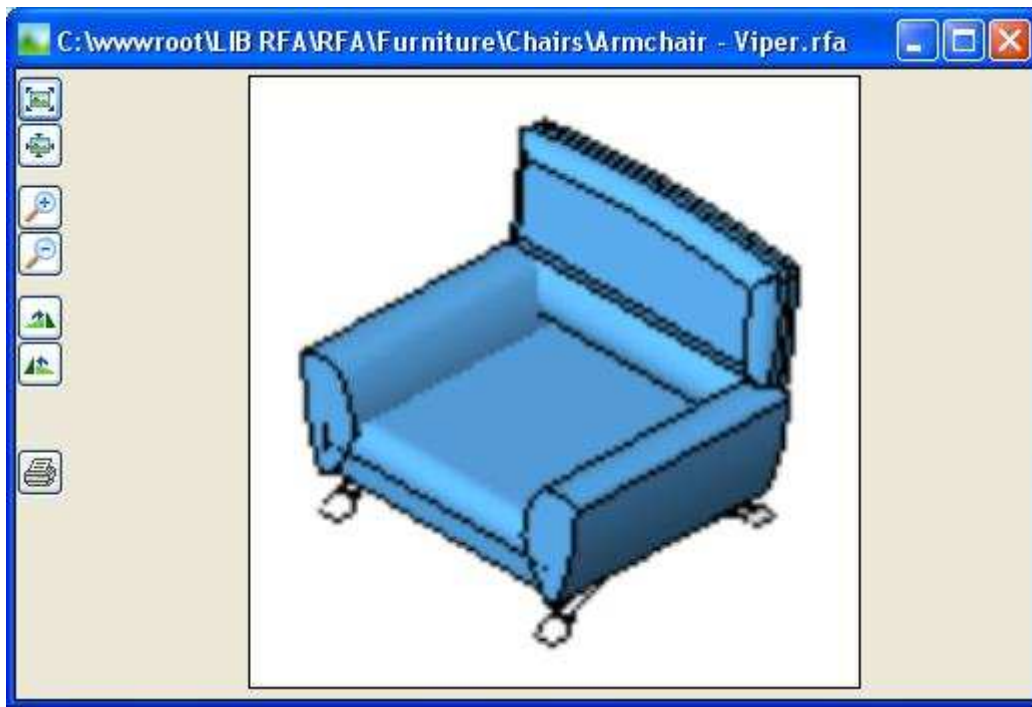
Parameter List (editable)



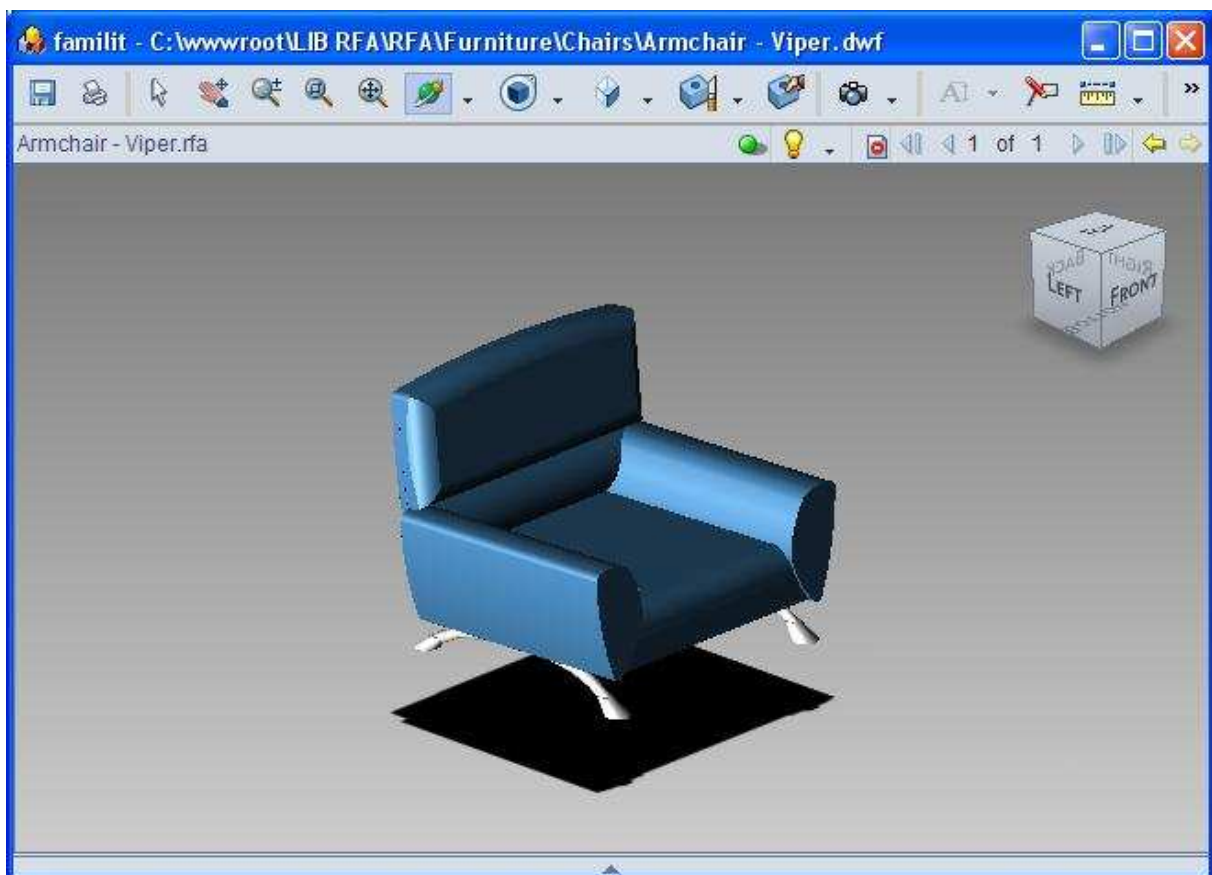
Add a new family type



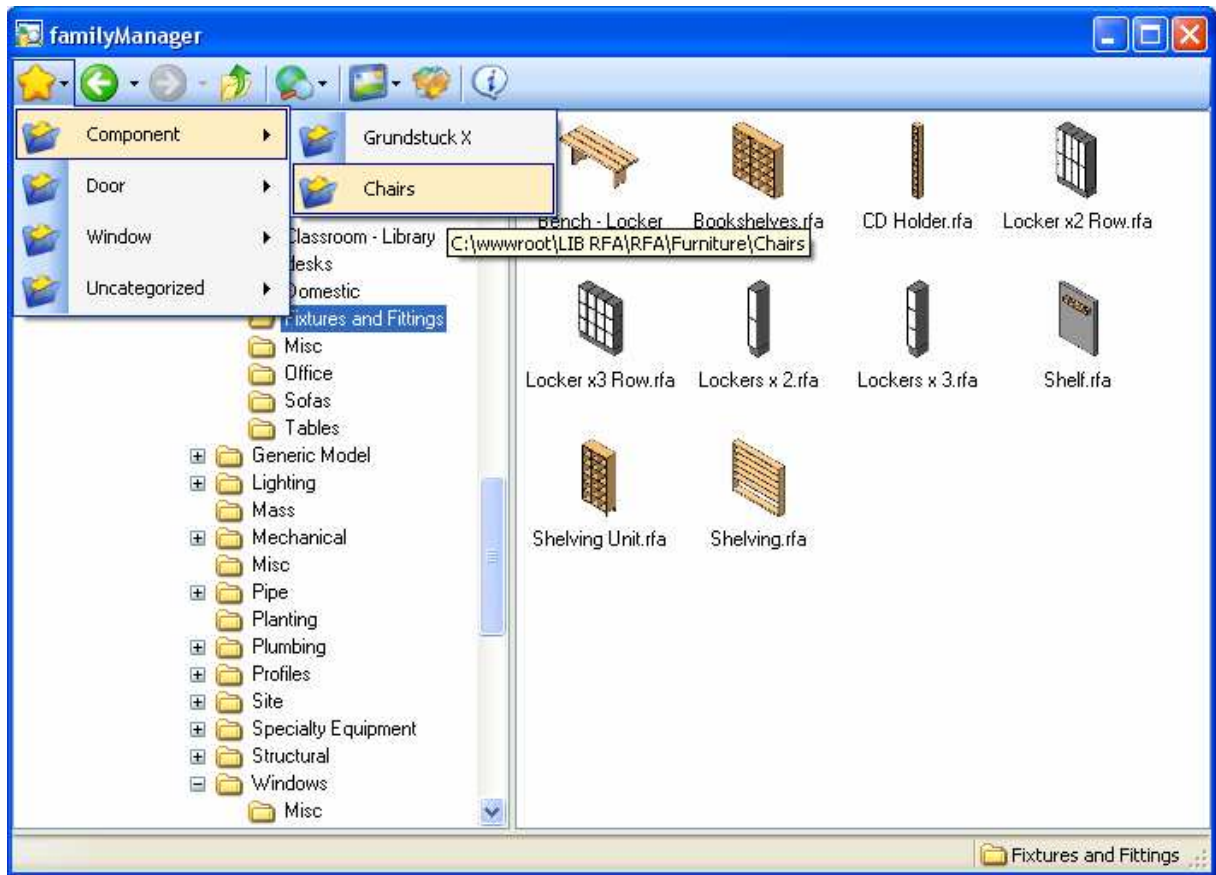
Thumbnail's context menu



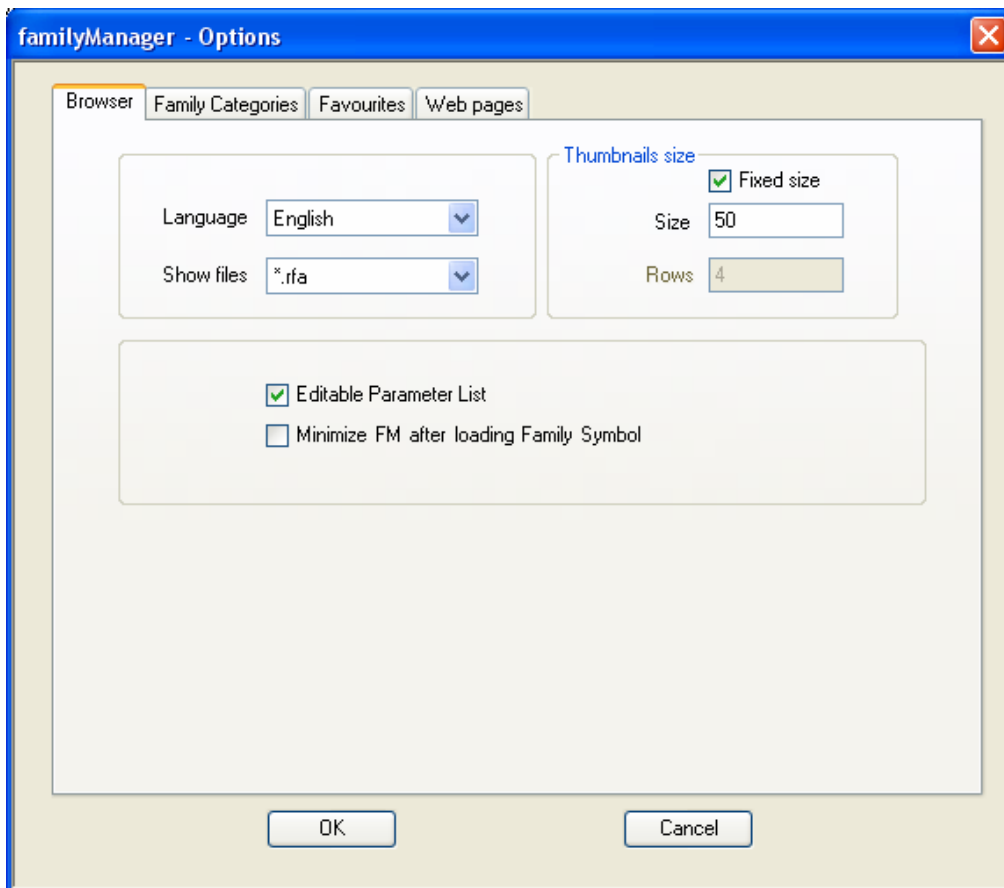
Viewer



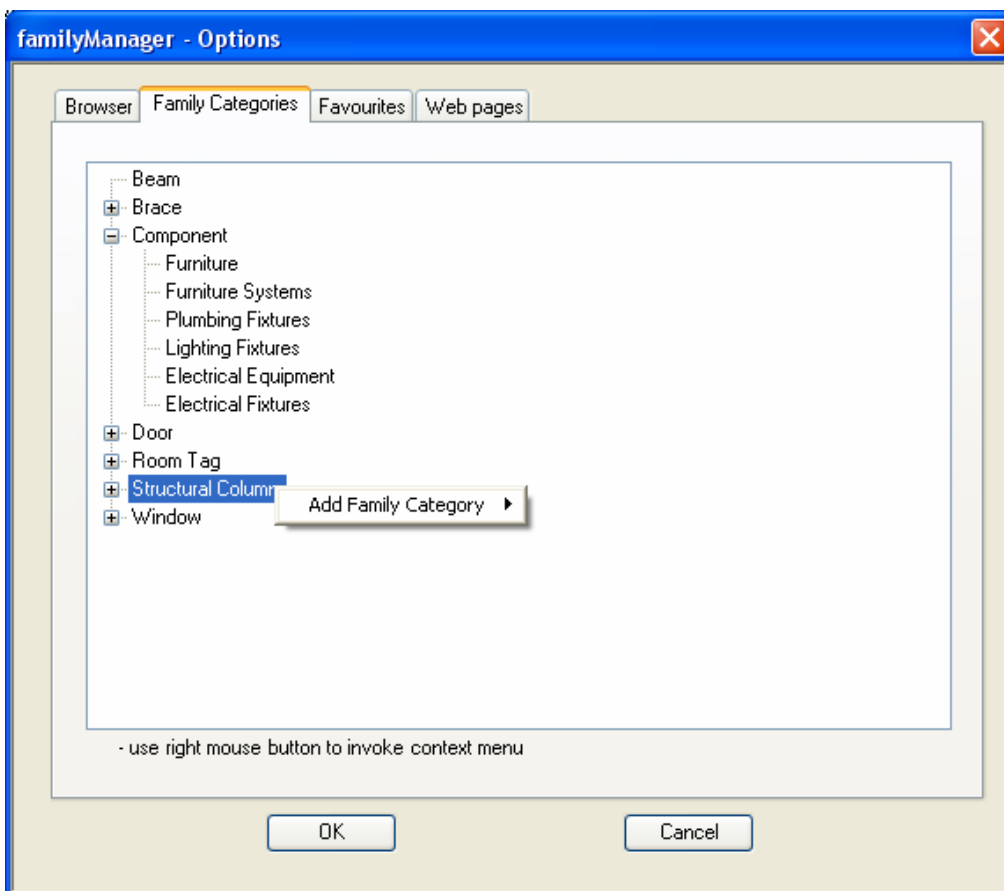
3D viewer



Favourites menu

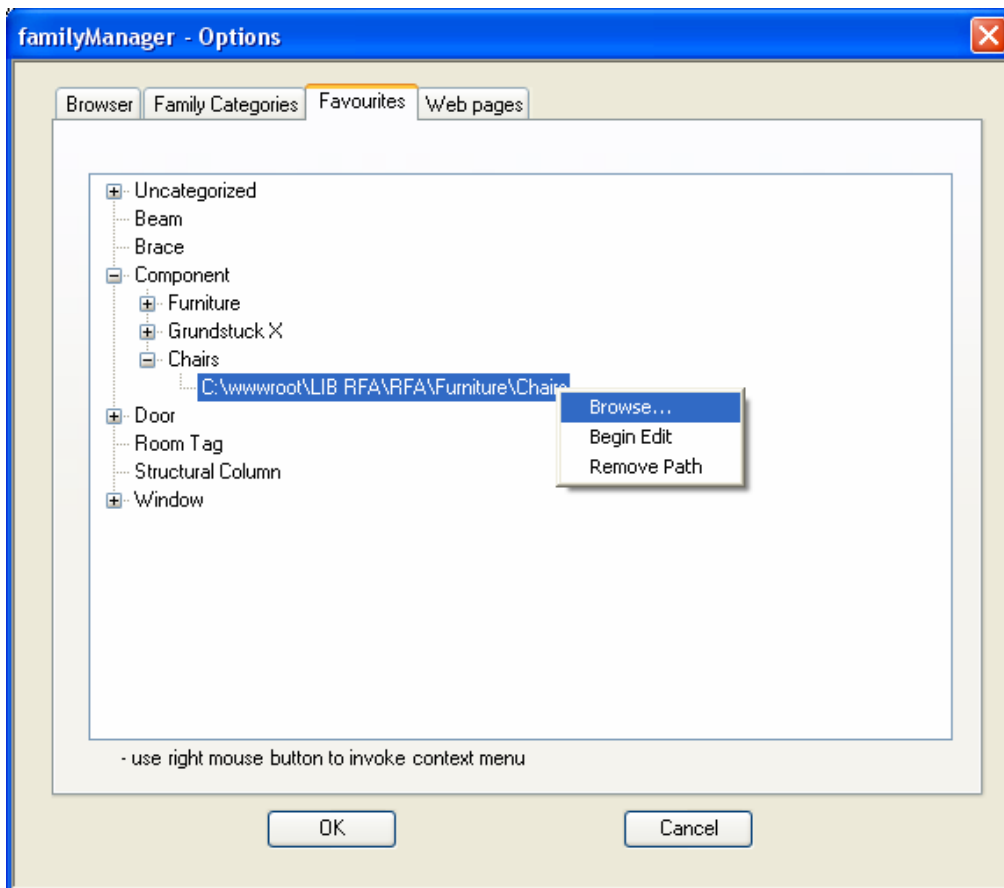


Options

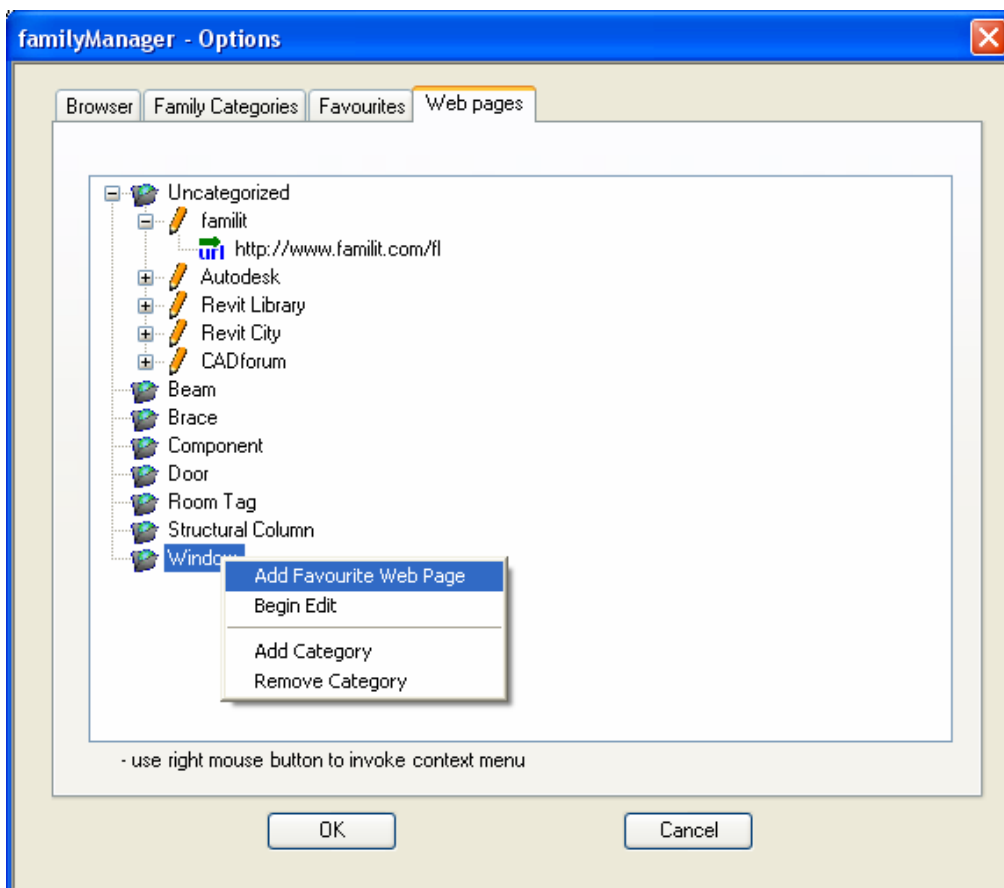


Family Categories





Favourite Folders



Favourite Web Pages